

LAKE VIEW COLONY

Being a Subdivision of Section 23 Township 41 S. R. 37 E.

W. N. 2 55' E.

Surveyors Certificate

I, J. A. Davison a duly qualified Surveyor, do hereby certify that at the request of G. A. Watkins, the owner thereof, I have carefully and accurately surveyed the lands here after described, and in accordance with such survey, have made the enclosed plat of said land, which plat correctly shows the numbers and dimensions of all lots into which said land has been subdivided and platted.

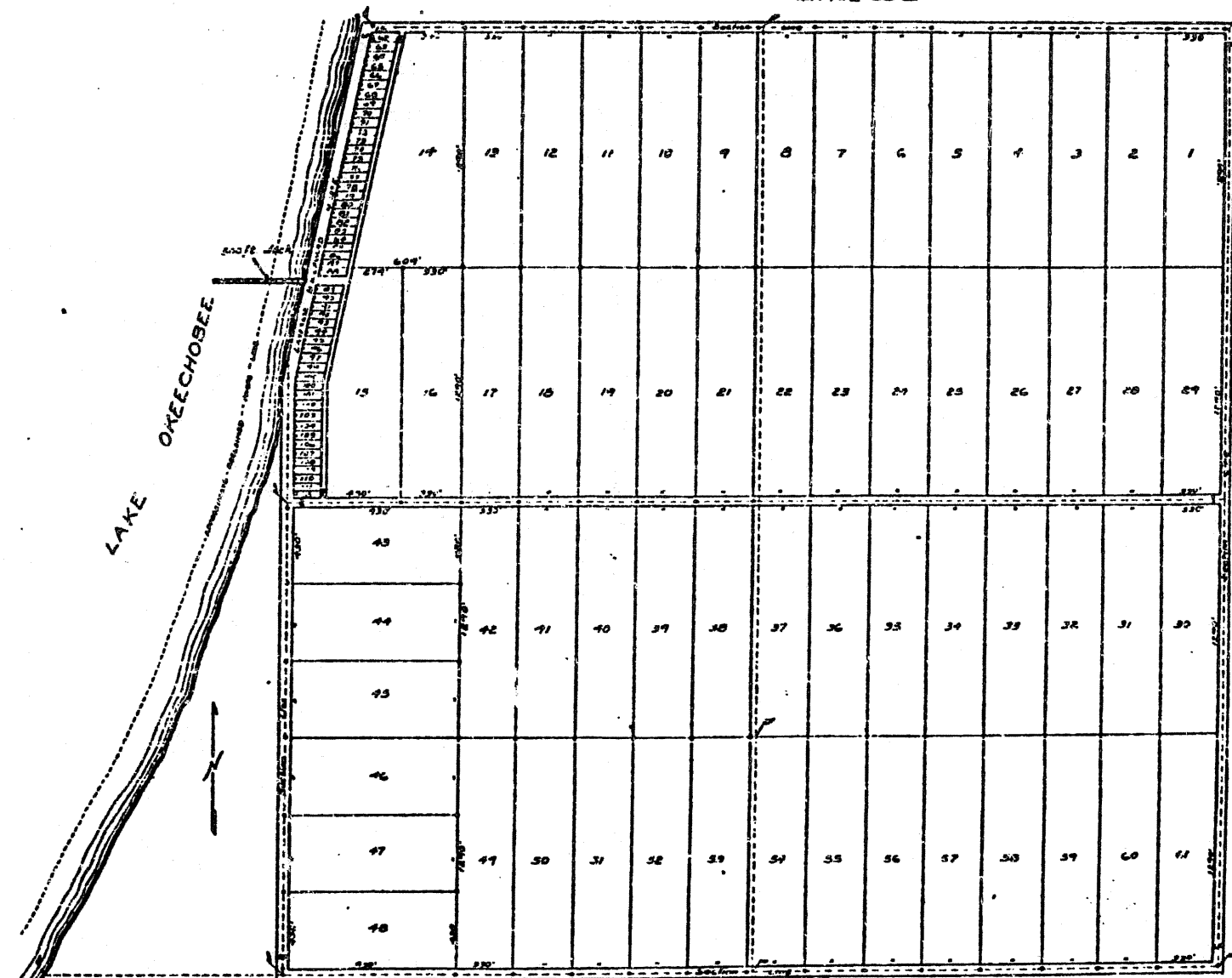
That said survey and the accompanying plat are based upon the field notes of the United States Survey, and that the starting points were determined by witness trees described therein, particularly as follows: A cypress tree bearing E 2° W. 220 links containing 7 and chips denoting the 7th Travers point, said point being the intersection of the west line of Section 23 Township 41 South Range 37 East, a Cypress tree at same point bearing N 55° E. 20 links, to verify this point I traversed the east shore of the lake in a northerly direction, following the course and measurements given in field notes to the Travers point at intersection of the north line of said Section 23 with the west shore of the lake, finding at that point two blazed cypress trees, N 37° E. 170 links (field notes called for Bay) Cypress S 43° E. 107 links as given in field notes.

To further verify and test variation of compass I traversed the shore line in reverse order on the west line of section 23 and found it to check correctly with Travers, the already run, variation being N 2° 55' E.

I then traversed the shore line in a southerly direction following the course and measurements given in field notes to the Travers point on the south line of the township and found one witness tree, a well marked cypress tree on which were the range and section numbers, thus identifying myself that my starting point was correct I returned to the Travers point on the west line of Sec 23 and proceeded with the survey of said Sec 23 as shown in plat, following all courses and measurements as given in field notes for same. Said plat is drawn to a scale of 6 chains to 1 inch, and the survey upon which it is based was made by me in the month of June 1910.

Witness my hand this 13th day of June A.D. 1910.

J. A. Davison
Surveyor



Surveyed by J. A. Davison and Son
June - 1910
Scale = 6 chs = 100 ft

1000-791

Filed Sept 22-1910
Recorded in Plat
Book 1 page 94
Judge G. G. G. G.
By W. B. G. G.

94
Copied by
BIDWELL & HOLSTLAW
Under direction of
CHAFFUCLES
County Engineer
Printed by R. C. F. CHAFFUCLES